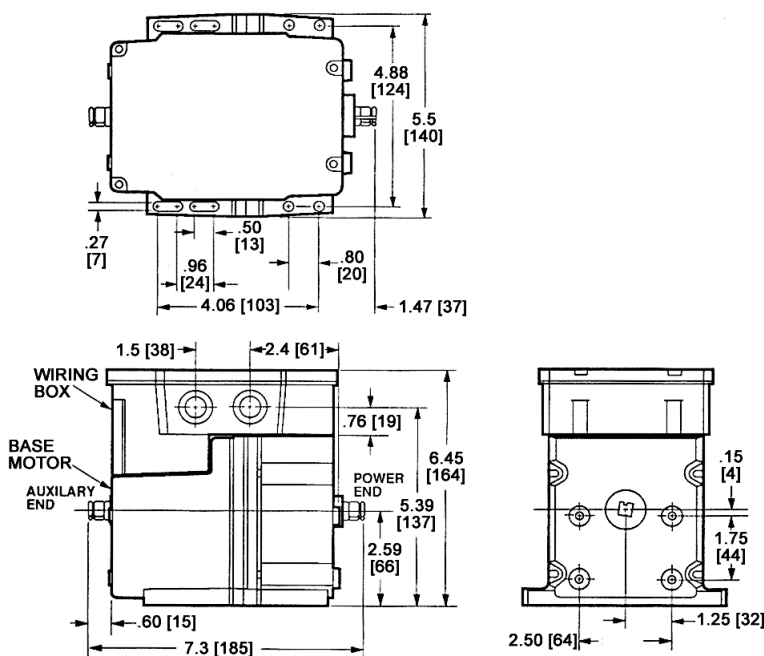
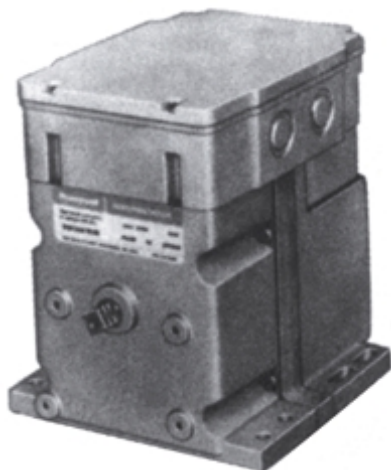


**Hauck Manufacturing Company****COMBUSTION CONTROL ACCESSORIES**  
**CONTROL MOTORS (CM)**

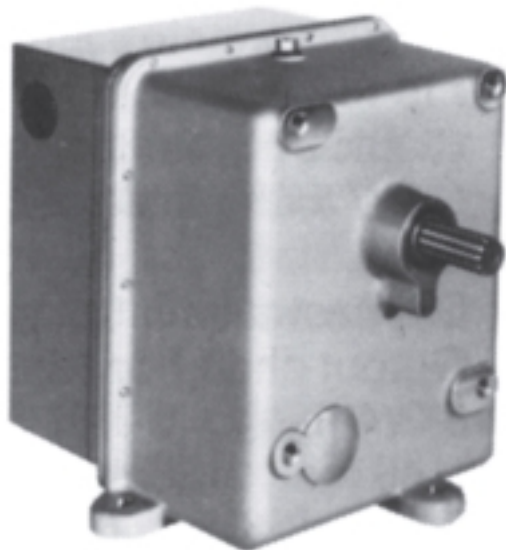
Hauck control motors provide precise modulation control for valve and damper applications on combustion systems. The following standard models are available. Additional models and configurations are available on request.

The 7284 and 6284 control motors provide reliable performance for medium torque applications. Both 4-20mA current and floating control models are available. Mounting brackets, linkage and associated components are available.

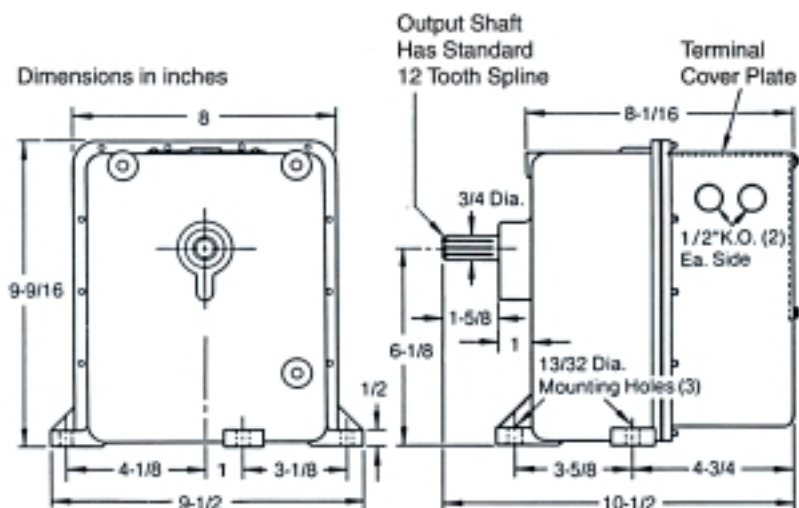
**Dimensions (Inches/mm)****Control Motors**

Model No.	Hauck Part No.	Torque	Timing	Stroke	Input Signal	Features	Voltage
6284C	62960	150 in-lb	30 sec	90°	Floating (24VAC)	135-Ohm slidewire 2 Auxiliary Switches	120 VAC/50-60 Hz
7284A	61090	150 in-lb	30 sec	90°	4-20 mA	No Auxiliary Switches	120 VAC/50-60 Hz
7284C	60784	150 in-lb	30 sec	90°	4-20 mA	2 Auxiliary Switches	120 VAC/50-60 Hz
7284Q	61190	150 in-lb	30 sec	90°	4-20 mA	Adj. Zero & Span 2 Auxiliary Switches	120 VAC/50-60 Hz

**(OVER)****CM-1**

**CONTROL MOTORS (CM)**

The EA-71 and EA-73 provide reliable performance for applications requiring high torque. The motors provide floating control via two 120VAC switched inputs. They include an integral 100-Ohm slidewire for position feedback and a SPDT auxiliary switch. External current-to-position and resistance-to-position converters along with mounting brackets, linkage and associated components are available.

**Dimensions (Inches)****Control Motors**

Model No.	Hauck Part No.	Torque	Timing	Stroke	Control Type	Features	Voltage
EA-71	20627	550 in-lb	20 sec	90°	Floating	Auxiliary Switch & 100 Ohm Slidewire	120 VAC/60 Hz
EA-73	57152	1110 in-lb	33 sec	90°	Floating	Auxiliary Switch & 100 Ohm Slidewire	120 VAC/60 Hz

**CM-1**